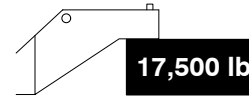
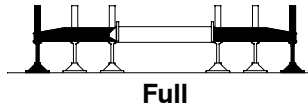


**Rated Lifting Capacities  
In Pounds**



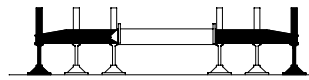
Load Radius (ft)	38.0 ft		50.0 ft		60.0 ft		70.0 ft		80.0 ft		90.0 ft		
	$\Delta^\circ$	360°	$\Delta^\circ$	360°	$\Delta^\circ$	360°	$\Delta^\circ$	360°	$\Delta^\circ$	360°	$\Delta^\circ$	360°	
9	69.5	165,800											
10	68.0	156,500	74.0	80,500	77.0	58,000	79.5	55,900					
12	64.5	137,100	71.5	75,100	75.0	53,800	77.5	52,300	79.5	41,900			
15	59.0	108,800	67.5	68,100	72.0	48,400	75.0	47,500	77.5	41,900	79.0	33,500	
20	49.5	79,500	61.0	59,100	67.0	41,400	71.0	41,100	74.0	41,900	76.0	33,500	
25	37.5	61,500	54.0	52,200	61.5	36,100	66.5	36,300	70.0	37,900	73.0	33,500	
30	18.5	47,200	46.0	46,900	55.5	32,000	61.5	32,400	66.0	34,000	69.5	31,400	
35			37.0	39,600	49.0	28,800	56.5	29,200	62.0	30,400	66.0	28,200	
40				24.0	31,500	42.0	26,100	51.5	26,600	58.0	27,600	62.5	25,500
45						33.5	23,900	45.5	24,400	53.5	25,100	58.5	23,300
50					22.0	22,200	39.0	22,600	48.5	23,100	54.5	21,400	
55							31.5	20,300	43.0	20,800	50.5	19,800	
60							20.5	17,600	37.0	18,000	46.0	18,200	
65									29.5	15,700	40.5	16,000	
70									19.5	13,900	35.0	14,100	
75											28.0	12,500	
80											18.5	11,100	
Min.Bm.	0.0	31,900	0.0	18,200	0.0	13,000	0.0	10,800	0.0	9,200	0.0	7,900	
Ang./Cap.	(31.0)		(43.0)		(53.0)		(63.0)		(73.0)		(83.0)		

Load Radius (ft)	100.0 ft		110.0 ft		120.0 ft		130.0 ft		140.0 ft	
	$\Delta^\circ$	360°	$\Delta^\circ$	360°	$\Delta^\circ$	360°	$\Delta^\circ$	360°	$\Delta^\circ$	360°
20	77.5	32,200	79.0	27,200						
25	75.0	32,200	76.5	27,200	78.0	28,100	79.5	26,900		
30	72.0	32,200	74.0	27,200	76.0	28,100	77.5	26,500	78.5	24,400
35	69.0	29,700	71.5	27,200	73.5	28,100	75.5	26,300	77.0	24,100
40	66.0	27,100	69.0	27,200	71.5	28,100	73.5	26,100	75.0	24,000
45	62.5	24,900	66.0	25,900	69.0	26,200	71.5	25,900	73.5	23,800
50	59.5	23,000	63.0	23,800	66.5	23,800	69.0	23,400	71.5	23,000
55	55.5	20,800	60.0	20,700	63.5	20,400	66.0	20,000	69.0	19,600
60	52.0	18,100	56.5	18,000	60.5	17,600	63.5	17,200	66.5	16,900
65	47.5	15,800	53.0	15,700	57.0	15,400	60.5	15,000	64.0	14,700
70	43.5	14,000	49.5	13,900	54.0	13,500	58.0	13,100	61.0	12,800
75	38.5	12,400	45.5	12,300	51.0	12,000	55.0	11,600	58.5	11,300
80	33.0	11,000	41.5	10,900	47.5	10,600	52.0	10,200	56.0	9,900
85	26.5	9,800	37.0	9,700	43.5	9,400	49.0	9,000	53.0	8,700
90	17.5	8,700	31.5	8,600	39.5	8,300	45.5	8,000	50.0	7,600
95			25.5	7,700	35.5	7,400	42.0	7,000	47.0	6,700
100			17.0	6,900	30.5	6,600	38.0	6,200	44.0	5,900
105					24.5	5,800	34.0	5,500	40.5	5,200
110					16.0	5,200	29.5	4,800	37.0	4,500
115							23.5	4,300	33.0	3,900
120							15.5	3,700	28.5	3,400
125									23.0	2,900
130									15.5	2,500
Min.Bm.	0.0	6,600	0.0	5,500	0.0	4,400	0.0	3,300	0.0	2,300
Ang./Cap.	(93.0)		(103.0)		(113.0)		(123.0)		(133.0)	

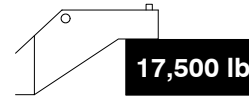
( ) Reference Radius For Minimum Boom Angle Capacities (Shown In Parenthesis) Are In Feet.

Not for crane operations

**Rated Lifting Capacities  
In Pounds**



Full



17,500 lb



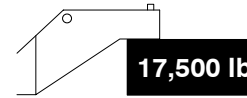
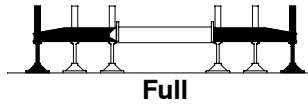
Load Radius (ft)	38.0 ft		50.0 ft		60.0 ft		70.0 ft		80.0 ft	
	$\angle$ °	360°	$\angle$ °	360°	$\angle$ °	360°	$\angle$ °	360°	$\angle$ °	360°
9	69.5	165,800								
10	68.0	156,500	74.0	82,600	77.0	87,000	79.5	73,000		
12	64.5	137,100	71.5	77,100	75.0	81,900	77.5	67,700	79.5	55,700
15	59.0	108,800	67.5	70,000	72.0	75,200	75.0	61,000	77.5	55,700
20	49.5	79,500	61.0	60,900	67.0	66,300	71.0	52,300	73.5	48,300
25	37.5	61,500	54.0	53,900	61.5	59,400	66.5	45,600	70.0	42,400
30	18.5	47,200	46.0	48,500	55.5	52,300	61.5	40,400	66.0	37,800
35			37.0	39,500	49.0	40,600	56.5	36,200	62.0	34,000
40			24.0	31,500	42.0	32,600	51.5	32,800	57.5	30,900
45					33.5	26,800	45.5	27,500	53.0	27,700
50					21.5	22,500	39.0	23,300	48.0	23,500
55							31.0	19,800	42.5	20,100
60							20.0	17,100	36.5	17,300
65									29.0	15,100
70									19.0	13,200
Min.Bm.	0.0	31,900	0.0	18,400	0.0	15,200	0.0	12,600	0.0	10,500
Ang./Cap.	(31.0)		(43.0)		(53.0)		(63.0)		(73.0)	

Load Radius (ft)	90.0 ft		100.0 ft		110.0 ft		120.0 ft		127.3 ft	
	$\angle$ °	360°	$\angle$ °	360°	$\angle$ °	360°	$\angle$ °	360°	$\angle$ °	360°
15	79.0	45,000								
20	76.0	45,000	78.0	40,300	79.5	42,500				
25	73.0	43,900	75.0	40,300	77.0	42,500	78.5	33,700	79.0	29,700
30	69.5	39,500	72.0	37,100	74.5	38,300	76.0	31,200	77.5	29,400
35	66.0	35,900	69.0	33,300	72.0	34,700	74.0	30,900	75.0	29,100
40	62.5	32,800	66.0	30,100	69.0	31,700	71.5	30,600	73.0	28,800
45	58.5	27,700	62.5	27,500	66.0	27,200	69.0	26,800	71.0	26,500
50	54.5	23,400	59.0	23,400	63.0	23,000	66.0	22,600	68.0	22,400
55	50.0	20,000	55.5	20,000	59.5	19,600	63.0	19,200	65.5	19,000
60	45.5	17,300	51.5	17,300	56.0	16,900	60.0	16,500	62.5	16,300
65	40.0	15,100	47.5	15,000	52.5	14,700	57.0	14,300	59.5	14,100
70	34.5	13,200	43.0	13,200	49.0	12,800	54.0	12,500	57.0	12,300
75	27.5	11,600	38.5	11,600	45.0	11,200	50.5	10,900	54.0	10,700
80	18.0	10,200	33.0	10,200	41.0	9,800	47.0	9,500	50.5	9,300
85			26.5	9,000	36.5	8,600	43.5	8,300	47.5	8,100
90			17.5	7,900	31.5	7,600	39.5	7,300	44.0	7,000
95					25.0	6,700	35.0	6,300	40.5	6,100
100					16.5	5,800	30.0	5,500	36.5	5,300
105							24.5	4,800	32.0	4,600
110							16.0	4,200	26.5	4,000
115									20.0	3,400
120									7.5	2,800
Min.Bm.	0.0	8,600	0.0	7,100	0.0	5,400	0.0	3,800	0.0	2,800
Ang./Cap.	(83.0)		(93.0)		(103.0)		(113.0)		(120.3)	

( ) Reference Radius For Minimum Boom Angle Capacities (Shown In Parenthesis) Are In Feet.

Not for crane operations

**Rated Lifting Capacities  
In Pounds**



Load Radius (ft)	38.0 ft		50.0 ft		60.0 ft		70.0 ft	
	$\Delta^\circ$	360°	$\Delta^\circ$	360°	$\Delta^\circ$	360°	$\Delta^\circ$	360°
9	69.5	165,800						
10	68.0	156,500	74.0	103,300	77.0	96,400	79.0	70,800
12	64.5	137,100	71.5	103,300	75.0	89,600	77.5	70,800
15	59.0	108,800	68.0	103,300	72.0	79,900	75.0	70,800
20	49.5	79,500	61.0	81,700	67.0	67,800	71.0	63,500
25	37.5	61,500	54.0	63,800	61.5	58,800	66.5	55,100
30	18.5	47,200	46.0	50,300	55.5	51,600	61.5	48,100
35			36.5	38,700	49.0	39,900	56.5	40,300
40			24.0	30,700	42.0	32,000	51.0	32,400
45					33.5	26,300	45.5	26,700
50					21.5	21,900	39.0	22,400
55							31.0	19,000
60							20.0	16,200
Min.Bm. Ang./Cap.	0.0 (31.0)	31,900	0.0 (43.0)	23,100	0.0 (53.0)	18,300	0.0 (63.0)	14,600

Load Radius (ft)	80.0 ft		90.0 ft		100.0 ft		115.8 ft	
	$\Delta^\circ$	360°	$\Delta^\circ$	360°	$\Delta^\circ$	360°	$\Delta^\circ$	360°
12	79.5	70,800						
15	77.5	67,700	79.0	54,300				
20	74.0	58,400	76.0	52,100	78.0	49,100		
25	70.0	51,300	73.0	45,700	75.0	45,200	78.0	36,300
30	66.0	45,500	69.5	40,600	72.5	42,300	76.0	35,900
35	62.0	40,400	66.0	36,500	69.5	38,300	73.5	35,500
40	57.5	32,500	62.5	32,500	66.0	32,100	71.0	31,500
45	53.0	26,700	58.5	26,800	62.5	26,300	68.0	25,800
50	48.0	22,500	54.0	22,500	59.0	22,100	64.5	21,600
55	42.5	19,100	50.0	19,200	55.0	18,800	61.5	18,300
60	36.5	16,400	45.0	16,500	51.5	16,100	58.5	15,600
65	29.0	14,200	40.0	14,200	47.5	13,900	55.5	13,400
70	19.0	12,300	34.5	12,400	43.0	12,000	52.0	11,600
75			27.5	10,800	38.0	10,400	48.5	10,000
80			18.0	9,400	32.5	9,000	45.0	8,600
85					26.0	7,900	41.0	7,400
90					17.0	6,800	36.5	6,400
95							31.5	5,500
100							26.0	4,700
105							18.0	4,000
Min.Bm. Ang./Cap.	0.0 (73.0)	11,300	0.0 (83.0)	8,600	0.0 (93.0)	6,200	0.0 (108.8)	3,500

( ) Reference Radius For Minimum Boom Angle Capacities (Shown In Parenthesis) Are In Feet.

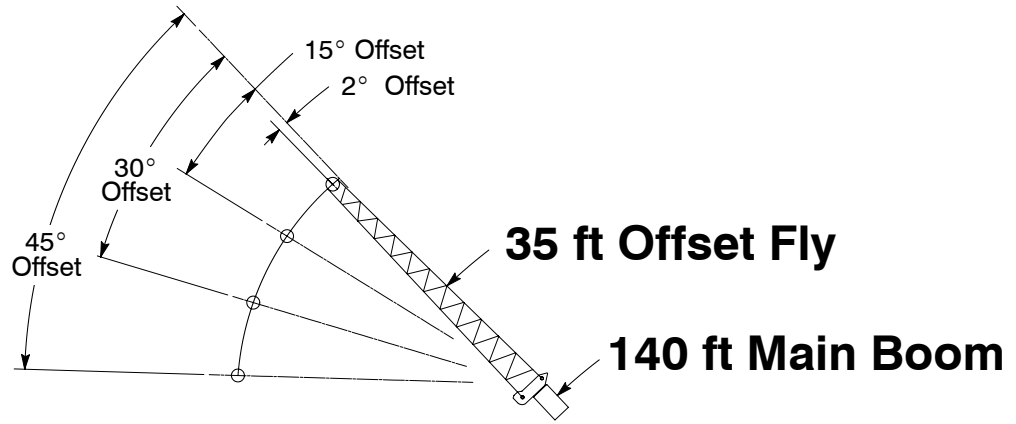
Not for crane operations

Rated Lifting Capacities In Pounds		38.0 ft		50.0 ft		60.0 ft		70.0 ft		80.0 ft		90.0 ft		102.0 ft	
		$\Delta$ °	360°	$\Delta$ °	360°	$\Delta$ °	360°	$\Delta$ °	360°	$\Delta$ °	360°	$\Delta$ °	360°	$\Delta$ °	360°
9	69.5	165,800													
10	68.0	156,500	74.0	82,600	77.0	87,000	79.0	89,700							
12	64.5	137,100	71.5	77,100	75.0	81,900	77.5	85,000	79.0	63,600					
15	59.0	108,800	67.5	70,000	72.0	75,200	75.0	78,800	77.0	63,600	79.0	57,700			
20	49.5	79,500	61.0	60,900	67.0	66,300	71.0	70,300	73.5	63,600	76.0	56,200	78.0	46,600	
25	37.5	61,500	54.0	53,900	61.5	59,400	66.5	63,600	70.0	63,600	72.5	55,300	75.5	45,800	
30	18.5	47,200	46.0	48,500	55.5	52,300	61.5	52,500	66.0	52,100	69.5	51,500	73.0	45,200	
35			37.0	39,500	49.0	40,600	56.5	40,800	61.5	40,500	65.5	40,000	69.5	39,500	
40			24.0	31,500	42.0	32,600	51.0	32,900	57.0	32,600	62.0	32,100	66.5	31,700	
45					33.5	26,800	45.0	27,100	52.5	26,900	58.0	26,400	63.0	26,000	
50					21.5	22,500	38.5	22,800	47.5	22,600	54.0	22,200	59.5	21,800	
55							31.0	19,400	42.0	19,300	49.5	18,800	56.0	18,400	
60							20.0	16,700	36.0	16,500	45.0	16,100	52.0	15,700	
65									28.5	14,300	40.0	13,900	48.5	13,500	
70									18.5	12,400	34.0	12,100	44.0	11,700	
75											27.0	10,500	39.5	10,100	
80											17.5	9,000	34.5	8,700	
85													28.5	7,500	
90													21.0	6,500	
Min.Bm. Ang./Cap.	0.0 (31.0)	31,900	0.0 (43.0)	18,400	0.0 (53.0)	15,200	0.0 (63.0)	12,400	0.0 (73.0)	9,900	0.0 (83.0)	7,800	0.0 (95.0)	5,500	

Fixed Boom Length Rated Lifting Capacities In Pounds See Operation Note 10.		38.0 ft		50.7 ft		63.7 ft		76.5 ft	
		$\Delta$ °	360°	$\Delta$ °	360°	$\Delta$ °	360°	$\Delta$ °	360°
9	69.5	165,800							
10	68.0	156,500	74.5	152,100	78.0	117,900			
12	64.5	137,100	72.0	138,700	76.0	108,800	79.0	85,100	
15	59.0	108,800	68.0	110,900	73.5	106,500	76.5	78,400	
20	49.5	79,500	61.5	81,800	68.5	82,200	73.0	76,500	
25	37.5	61,500	54.5	63,900	63.5	64,300	68.5	63,900	
30	18.5	47,200	47.0	50,400	58.0	51,000	64.5	50,300	
35			38.0	38,900	52.0	39,400	60.0	38,800	
40			26.0	30,900	45.5	31,500	55.0	31,000	
45					38.5	25,800	50.0	25,400	
50					29.5	21,500	45.0	21,100	
55					16.5	18,100	39.0	17,800	
60							32.0	15,100	
65							22.5	12,800	
Min.Bm. Ang./Cap.	0.0 (31.0)	31,900	0.0 (43.7)	22,700	0.0 (56.7)	16,400	0.0 (69.5)	11,100	

( ) Reference Radius For Minimum Boom Angle Capacities (Shown In Parenthesis) Are In Feet.

Not for crane operations

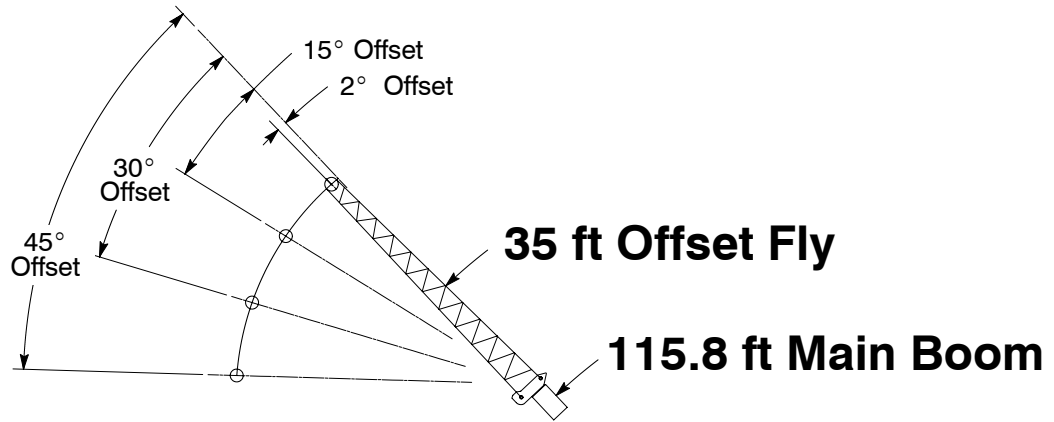


Rated Lifting Capacities In Pounds		Full		17,500 lb		EM 1		
		2° Offset		15° Offset		30° Offset		45° Offset
Load Radius In (ft)	2°		15°		30°		45°	
	0°	360°	0°	360°	0°	360°	0°	360°
35	80.0	12,100						
40	78.5	12,100						
45	77.5	12,100	80.0	11,500				
50	76.0	12,100	78.5	11,400				
55	74.5	12,100	77.0	11,200	79.5	10,000		
60	73.0	12,100	75.5	11,000	78.0	9,800		
65	71.5	11,900	74.0	10,800	76.5	9,700	78.5	8,800
70	70.0	11,700	72.5	10,600	75.0	9,500	77.0	8,800
75	68.5	11,500	71.0	10,400	73.5	9,400	75.0	8,700
80	66.5	10,500	69.5	10,200	71.5	9,200	73.5	8,600
85	64.5	9,300	67.5	9,900	70.0	9,100	71.5	8,600
90	62.5	8,200	65.5	8,800	68.0	9,000	70.0	8,500
95	60.0	7,300	63.0	7,800	66.0	8,300	68.0	8,400
100	58.0	6,500	61.0	6,900	63.5	7,400	65.5	7,700
105	55.5	5,700	58.5	6,100	61.0	6,500	63.0	6,800
110	53.5	5,100	56.0	5,400	58.5	5,800	60.5	6,000
115	51.0	4,500	53.5	4,800	56.0	5,100	58.0	5,300
120	48.5	3,900	51.0	4,200	53.5	4,500	55.0	4,700
125	46.0	3,400	48.5	3,700	51.0	4,000	52.0	4,100
130	43.5	3,000	46.0	3,200	48.0	3,400	49.0	3,600
135	40.5	2,600	43.0	2,800	45.0	3,000	46.0	3,000
140	37.5	2,200	40.0	2,400	42.0	2,500		
145	34.5	1,800	37.0	2,000	38.5	2,100		
150	31.0	1,500	33.0	1,700	34.5	1,700		
155	27.0	1,200	29.0	1,300	30.0	1,400		
160	22.0	900	24.5	1,000				

**⚠ WARNING**

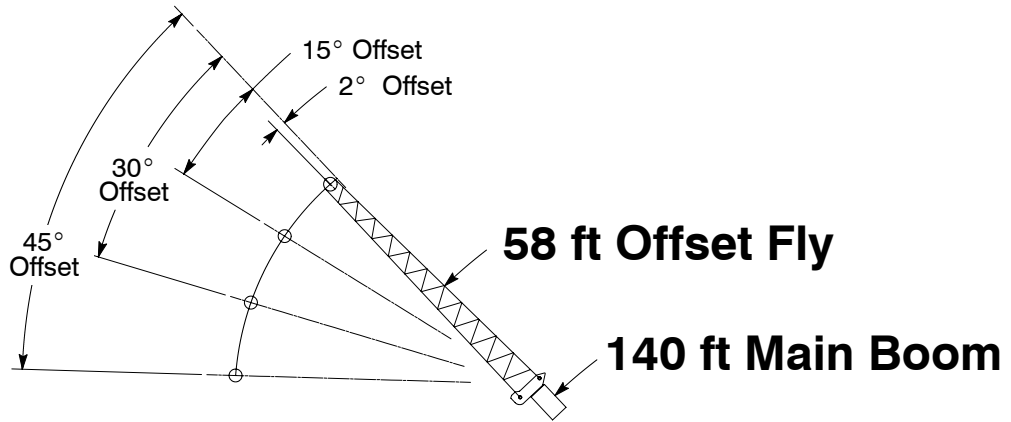
Do Not Lower 35 ft Offset Fly In Working Position Below 19.0 Degrees Unless Main Boom Length Is 138 ft Or Less, Since Loss Of Stability Will Occur Causing A Tipping Condition.

Not for crane operations



Rated Lifting Capacities In Pounds		Full				17,500 lb		EM 3	
		2° Offset		15° Offset		30° Offset		45° Offset	
Load Radius In (ft)	2°		15°		30°		45°		
	∠	360°	∠	360°	∠	360°	∠	360°	
30	79.5	20,000							
35	78.0	19,100							
40	76.0	18,100	78.5	13,700					
45	74.5	17,200	77.0	13,200	79.5	11,100			
50	72.5	16,400	75.0	12,800	78.0	10,800			
55	70.5	14,500	73.0	12,300	76.0	10,500	78.5	9,400	
60	68.5	14,000	71.0	11,900	74.0	10,300	76.5	9,200	
65	66.5	13,500	69.0	11,500	72.0	10,000	74.0	9,100	
70	64.5	12,800	67.0	11,200	70.0	9,800	72.0	9,000	
75	62.0	11,300	65.0	10,900	67.5	9,600	70.0	8,900	
80	59.5	9,900	63.0	10,600	65.5	9,400	67.5	8,800	
85	57.0	8,700	60.0	9,300	63.0	9,300	65.0	8,700	
90	54.5	7,600	57.5	8,200	60.5	8,700	62.5	8,700	
95	51.5	6,700	55.0	7,200	58.0	7,600	60.0	7,900	
100	49.0	5,900	52.0	6,300	55.0	6,700	56.5	7,000	
105	46.0	5,100	49.0	5,500	52.0	5,900	53.5	6,100	
110	43.0	4,500	46.0	4,800	48.5	5,100	50.0	5,300	
115	40.0	3,900	43.0	4,200	45.5	4,400	46.5	4,500	
120	36.5	3,300	39.5	3,600	41.5	3,800			
125	33.0	2,800	35.5	3,100	37.5	3,200			
130	28.5	2,400	31.5	2,600	33.0	2,700			
135	23.5	2,000	26.0	2,100					
140	17.0	1,600	19.5	1,700					
Min.Bm. Ang./Cap.	0.0	1,400	0.0	1,400	0.0	1,500	0.0	1,600	

Not for crane operations

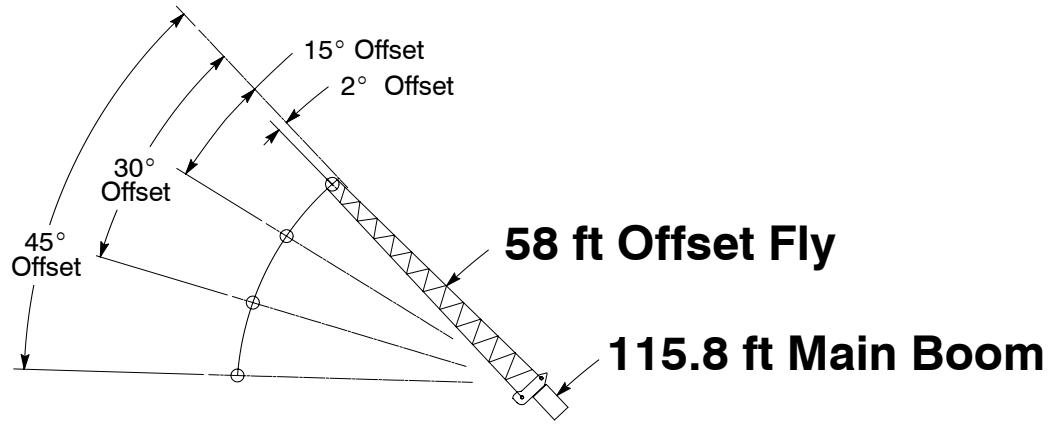


Rated Lifting Capacities In Pounds		2° Offset		15° Offset		30° Offset		45° Offset	
		$\Delta$ °	360°	$\Delta$ °	360°	$\Delta$ °	360°	$\Delta$ °	360°
45	79.5	8,500							
50	78.5	8,400							
55	77.5	8,300							
60	76.0	8,100	80.0	7,200					
65	75.0	8,000	78.5	7,000					
70	73.5	7,800	77.0	6,800					
75	72.5	7,700	76.0	6,700	79.5	5,700			
80	71.0	7,500	74.5	6,500	78.0	5,600			
85	69.5	7,300	73.0	6,300	76.5	5,500	80.0	4,900	
90	68.0	7,100	71.5	6,200	75.0	5,400	78.0	4,900	
95	66.5	6,900	70.0	6,000	73.5	5,300	76.5	4,800	
100	65.0	6,700	68.5	5,900	72.0	5,200	75.0	4,800	
105	63.0	6,200	67.0	5,700	70.5	5,100	73.5	4,700	
110	61.0	5,500	65.0	5,600	68.5	5,000	71.5	4,700	
115	59.0	4,900	63.5	5,500	67.0	4,900	69.5	4,700	
120	57.0	4,400	61.5	4,900	65.0	4,800	68.0	4,600	
125	55.0	3,800	59.5	4,400	63.5	4,700	66.0	4,500	
130	53.0	3,400	57.0	3,900	61.0	4,300	63.5	4,400	
135	51.0	3,000	55.0	3,400	58.5	3,800	61.5	4,100	
140	48.5	2,600	52.5	3,000	56.5	3,300	58.5	3,600	
145	46.5	2,200	50.0	2,600	53.5	2,900	56.0	3,100	
150	44.0	1,900	47.5	2,200	51.0	2,500	53.0	2,700	
155	41.5	1,600	45.0	1,900	48.5	2,100	49.5	2,200	
160	39.0	1,300	42.5	1,600	45.5	1,800	46.5	1,800	
165	36.0	1,000	39.5	1,300	42.5	1,400			
170			36.5	1,000	39.0	1,100			
175					35.0	800			

**⚠ WARNING**

Do Not Lower 58 ft Offset Fly In Working Position Below 34.0 Degrees Unless Main Boom Length Is 131 ft Or Less, Since Loss Of Stability Will Occur Causing A Tipping Condition.

Not for crane operations



Rated Lifting Capacities In Pounds		2° Offset		15° Offset		30° Offset		45° Offset	
		$\Delta$ °	360°	$\Delta$ °	360°	$\Delta$ °	360°	$\Delta$ °	360°
35	80.0	11,600							
40	78.5	11,200							
45	77.0	10,700							
50	75.5	10,300	79.5	8,400					
55	74.0	9,800	78.0	8,000					
60	72.5	9,400	76.5	7,700					
65	70.5	9,000	74.5	7,400	79.0	6,200			
70	69.0	8,600	73.0	7,100	77.5	6,000			
75	67.5	8,200	71.5	6,900	75.5	5,800	79.5	5,200	
80	65.5	7,900	69.5	6,700	73.5	5,700	77.5	5,100	
85	63.5	7,500	67.5	6,400	72.0	5,500	75.5	5,000	
90	62.0	7,200	66.0	6,200	70.0	5,400	73.5	4,900	
95	60.0	7,000	64.0	6,000	68.0	5,300	71.5	4,900	
100	58.0	6,600	62.0	5,900	66.0	5,200	69.0	4,800	
105	55.5	5,800	60.0	5,700	64.0	5,100	67.0	4,800	
110	53.5	5,100	58.0	5,500	61.5	5,000	64.5	4,700	
115	51.0	4,500	55.5	5,100	59.5	4,900	62.5	4,700	
120	48.5	4,000	53.0	4,500	57.0	4,900	59.5	4,700	
125	46.0	3,500	50.5	4,000	54.5	4,400	57.0	4,700	
130	43.0	3,000	47.5	3,500	51.5	3,800	53.5	4,100	
135	40.5	2,600	44.5	3,000	48.5	3,300	50.0	3,500	
140	37.5	2,200	41.5	2,600	45.0	2,800	46.0	2,900	
145	34.5	1,900	38.5	2,200	41.5	2,400			
150	31.0	1,500	34.5	1,800	37.0	2,000			
155	27.0	1,200	30.5	1,400	32.0	1,500			
160	22.0	1,000	25.5	1,100					

**WARNING**

Do Not Lower 58 ft Offset Fly In Working Position Below 19.0 Degrees Unless Main Boom Length Is 115 ft Or Less, Since Loss Of Stability Will Occur Causing A Tipping Condition.

Not for crane operations