

Main Boom Lift Capacity Charts – Optional

32,500 lb Counterweight – Fully Extended Outriggers – 360° Rotation (All Capacities Are Listed In Pounds)												
Radius (ft)	Boom Length (ft)											Radius (ft)
	38	50	60	70	76.5/80	90	100	110	120	130	140	
8	180,000*											8
9	167,100*											9
10	158,300*	152,100*	117,900	89,700								10
12	142,700*	138,700*	108,800	85,000	85,100**							12
15	119,300	121,400	106,500	78,800	78,400**	57,700						15
20	87,600	89,800	90,200	70,300	76,500**	56,200	49,100	42,500				20
25	68,000	70,300	70,800	63,600	70,300**	55,300	45,800	42,500	33,700	29,700		25
30	54,700	57,100	57,600	58,100	58,700	54,500	45,200	38,300	31,200	29,400	24,400	30
35		47,500	49,100	49,400	49,200	48,800	42,500	35,500	30,900	29,100	24,100	35
40		40,500	41,600	41,800	41,600	41,100	38,200	33,400	30,600	28,800	24,000	40
45			34,600	34,900	34,600	34,200	33,700	30,300	29,900	28,600	23,800	45
50			29,300	29,600	29,400	28,900	28,800	27,900	27,800	26,800	23,700	50
55				25,500	25,300	26,000	24,800	24,700	25,300	24,800	23,600	55
60				22,500	22,400	22,800	21,500	22,300	22,000	21,900	22,100	60
65					20,000	20,100	20,000	19,600	19,300	20,000	19,600	65
70					17,700	17,800	17,800	17,700	18,100	17,700	17,400	70
75						15,800	16,500	16,500	16,200	15,800	15,500	75
80						14,200	14,900	14,800	14,500	14,100	13,800	80
85							13,500	13,400	13,100	12,700	12,500	85
90								12,200	12,200	11,900	11,600	90
95									11,100	10,800	10,500	95
100									10,100	9,800	9,500	100
105										8,900	8,600	105
110										8,100	7,800	110
115											7,100	115
120											6,400	120
125												125
130												130

* Special Conditions Or Wire Rope Required
** 76.5 EM5 mode

This information is not for crane operation. Operator must refer to the in-cab information for crane operation. Rated lifting capacities shown on fully extended outriggers do not exceed 85% of the tipping loads and on tires do not exceed 75% of the tipping loads.

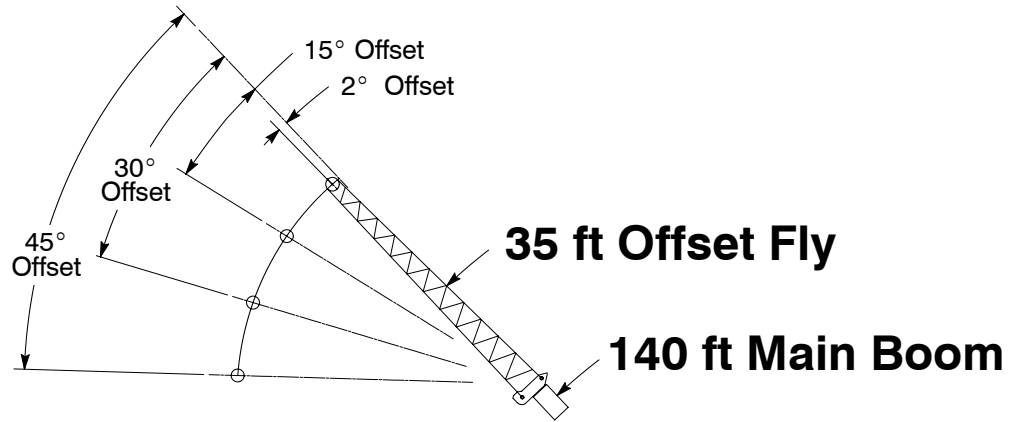
32,500 lb Counterweight – On Tires – Stationary – Boom Centered Over Rear
(All Capacities Are Listed In Pounds)

Radius (ft)	Boom Length (ft)							Radius (ft)
	38	50	60	70	80	90	100	
10	28,300							10
12	25,400	26,900						12
15	21,800	23,400	24,300					15
20	16,700	18,000	19,300	20,100				20
25	13,000	14,900	15,700	16,100	16,300			25
30	10,100	12,100	13,100	13,500	13,800	13,900	13,800	30
35		9,900	10,900	11,400	11,800	11,900	11,800	35
40		8,000	9,100	9,600	10,000	10,100	10,100	40
45			7,600	8,100	8,500	8,700	8,600	45
50			6,300	6,900	7,200	7,400	7,300	50
55				5,700	6,100	6,300	6,200	55
60				4,800	5,200	5,300	5,300	60
65					4,300	4,500	4,500	65
70					3,600	3,800	3,700	70
75						3,100	3,100	75
80						2,500	2,500	80
85							1,900	85
90							1,500	90

32,500 lb Counterweight – On Tires – Pick & Carry (1 mph) – Boom Centered Over Rear
(All Capacities Are Listed In Pounds)

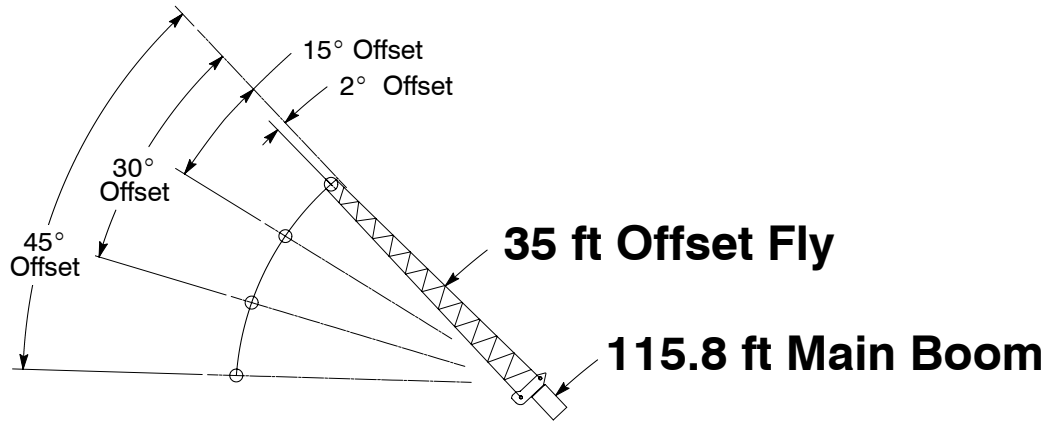
Radius (ft)	Boom Length (ft)							Radius (ft)
	38	50	60	70	80	90	100	
10	18,200							10
12	16,000	17,500						12
15	13,200	14,800	15,600					15
20	9,500	11,300	12,200	12,700				20
25	6,700	8,600	9,600	10,000	10,400			25
30	4,400	6,500	7,500	8,000	8,300	8,500	8,500	30
35		4,700	5,800	6,300	6,700	6,900	6,800	35
40		3,300	4,400	5,000	5,300	5,500	5,500	40
45			3,300	3,900	4,200	4,400	4,400	45
50			2,300	2,800	3,200	3,400	3,300	50
55				2,000	2,400	2,600	2,500	55
60				1,300	1,700	1,900	1,800	60
65					1,100	1,200	1,200	65

This information is not for crane operation. Operator must refer to the in-cab information for crane operation. Rated lifting capacities shown on fully extended outriggers do not exceed 85% of the tipping loads and on tires do not exceed 75% of the tipping loads.



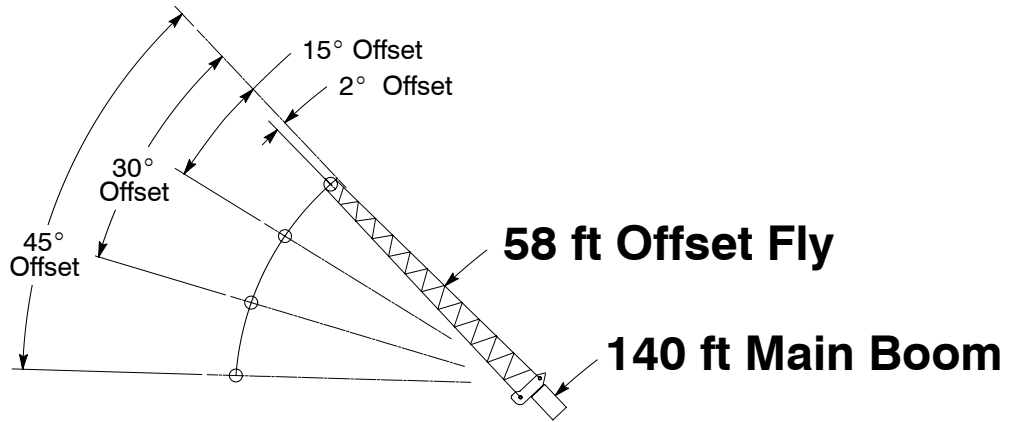
Load Radius In (ft)		2° Offset		15° Offset		30° Offset		45° Offset	
		Δ °	360°	Δ °	360°	Δ °	360°	Δ °	360°
35	80.0	12,100							
40	78.5	12,100							
45	77.5	12,100	80.0	11,500					
50	76.0	12,100	78.5	11,400					
55	74.5	12,100	77.0	11,200	79.5	10,000			
60	73.0	12,100	75.5	11,000	78.0	9,800			
65	71.5	11,900	74.0	10,800	76.5	9,700	78.5	8,800	
70	70.0	11,700	72.5	10,600	75.0	9,500	77.0	8,800	
75	68.5	11,500	71.0	10,400	73.5	9,400	75.0	8,700	
80	67.0	11,300	69.5	10,200	71.5	9,200	73.5	8,600	
85	65.5	11,000	67.5	10,000	70.0	9,100	71.5	8,600	
90	63.5	10,500	66.0	9,700	68.0	9,000	70.0	8,500	
95	61.5	10,100	64.0	9,400	66.0	8,800	68.0	8,400	
100	59.5	9,700	62.0	9,000	64.0	8,500	66.0	8,200	
105	57.5	8,800	60.0	8,700	62.0	8,200	63.5	8,000	
110	55.0	8,000	58.0	8,400	60.0	8,000	61.5	7,800	
115	52.5	7,300	55.5	7,600	57.5	7,700	59.0	7,600	
120	50.0	6,600	53.0	6,900	55.0	7,200	56.5	7,400	
125	47.5	6,000	50.0	6,300	52.5	6,500	54.0	6,700	
130	45.0	5,500	47.5	5,700	49.5	5,900	50.5	6,000	
135	42.0	5,000	44.5	5,200	46.5	5,400	47.5	5,400	
140	39.0	4,500	41.5	4,700	43.5	4,800			
145	35.5	4,100	38.0	4,200	40.0	4,400			
150	32.0	3,700	34.5	3,800	36.0	3,900			
155	28.0	3,300	30.5	3,400	31.5	3,500			
160	23.0	2,900	25.5	3,000					
165	16.5	2,500	18.0	2,600					
Min.Bm. Ang./Cap.	0.0	500	0.0	500	0.0	600	0.0	600	

Not for crane operations

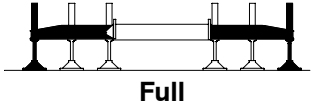
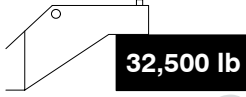



Rated Lifting Capacities In Pounds		Full				32,500 lb		EM 3	
		2° Offset		15° Offset		30° Offset		45° Offset	
Load Radius In (ft)	2°		15°		30°		45°		
	∠	360°	∠	360°	∠	360°	∠	360°	
30	79.5	20,000							
35	78.0	19,100							
40	76.0	18,100	78.5	13,700					
45	74.5	17,200	77.0	13,200	79.5	11,100			
50	72.5	16,400	75.0	12,800	78.0	10,800			
55	70.5	14,500	73.0	12,300	76.0	10,500	78.5	9,400	
60	68.5	14,000	71.0	11,900	74.0	10,300	76.5	9,200	
65	66.5	13,500	69.0	11,500	72.0	10,000	74.0	9,100	
70	64.5	13,000	67.0	11,200	70.0	9,800	72.0	9,000	
75	62.5	12,500	65.0	10,900	67.5	9,600	70.0	8,900	
80	60.0	12,000	63.0	10,600	65.5	9,400	67.5	8,800	
85	58.0	11,600	60.5	10,300	63.0	9,300	65.0	8,700	
90	55.5	11,200	58.0	10,000	61.0	9,100	62.5	8,700	
95	53.0	10,100	56.0	9,800	58.5	9,000	60.0	8,700	
100	50.0	9,100	53.0	9,500	55.5	8,900	57.5	8,700	
105	47.0	8,200	50.5	8,600	53.0	8,800	54.5	8,700	
110	44.0	7,400	47.0	7,800	50.0	8,100	51.0	8,200	
115	41.0	6,700	44.0	7,000	46.5	7,200	47.5	7,400	
120	37.5	6,000	40.5	6,300	42.5	6,500			
125	34.0	5,400	36.5	5,700	38.5	5,800			
130	29.5	4,900	32.0	5,100	34.0	5,200			
135	24.5	4,400	27.0	4,500					
140	17.5	3,900	20.0	4,000					
Min.Bm. Ang./Cap.	0.0	1,800	0.0	1,800	0.0	1,900	0.0	2,100	

Not for crane operations



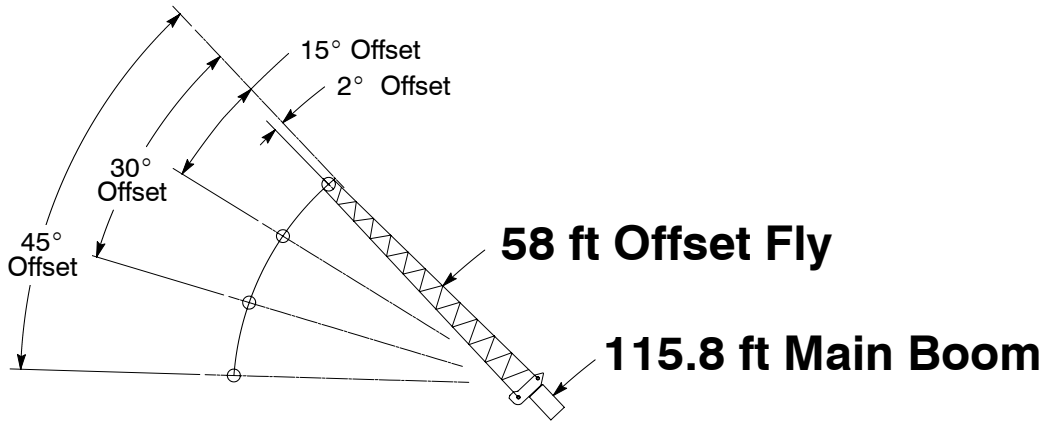
Rated Lifting Capacities In Pounds

Load Radius In (ft)	2° Offset		15° Offset		30° Offset		45° Offset	
	\angle °	360°	\angle °	360°	\angle °	360°	\angle °	360°
45	79.5	8,500						
50	78.5	8,400						
55	77.5	8,300						
60	76.0	8,100	80.0	7,200				
65	75.0	8,000	78.5	7,000				
70	73.5	7,800	77.0	6,800				
75	72.5	7,700	76.0	6,700	79.5	5,700		
80	71.0	7,500	74.5	6,500	78.0	5,600		
85	69.5	7,300	73.0	6,300	76.5	5,500	80.0	4,900
90	68.0	7,100	71.5	6,200	75.0	5,400	78.0	4,900
95	66.5	6,900	70.0	6,000	73.5	5,300	76.5	4,800
100	65.0	6,700	68.5	5,900	72.0	5,200	75.0	4,800
105	63.5	6,500	67.0	5,700	70.5	5,100	73.5	4,700
110	62.0	6,300	65.0	5,600	68.5	5,000	71.5	4,700
115	60.0	6,000	63.5	5,500	67.0	4,900	69.5	4,700
120	58.5	5,800	62.0	5,300	65.0	4,800	68.0	4,600
125	56.5	5,600	60.0	5,100	63.5	4,700	66.0	4,500
130	54.5	5,300	58.0	4,900	61.5	4,500	63.5	4,400
135	52.5	5,200	56.0	4,700	59.5	4,400	61.5	4,300
140	50.5	4,900	54.0	4,600	57.0	4,300	59.0	4,200
145	48.0	4,400	52.0	4,400	55.0	4,200	57.0	4,100
150	45.5	4,000	49.5	4,300	52.5	4,100	54.0	4,000
155	43.0	3,700	47.0	4,000	50.0	4,000	51.5	4,000
160	40.5	3,300	44.0	3,600	47.0	3,800	48.0	3,900
165	37.5	2,900	41.0	3,200	44.0	3,400		
170	34.0	2,600	38.0	2,800	40.0	3,000		
175	30.5	2,300	34.0	2,500	36.0	2,600		
180	26.5	2,000	30.0	2,100	31.0	2,200		
185	21.5	1,700	24.5	1,800				

⚠ WARNING

Do Not Lower 58 ft Offset Fly In Working Position Below 13.5 Degrees Unless Main Boom Length Is 135 ft Or Less, Since Loss Of Stability Will Occur Causing A Tipping Condition.



Rated Lifting Capacities In Pounds		Full		32,500 lb		EM 3		
		2° Offset		15° Offset		30° Offset		45° Offset
Load Radius In (ft)	2° Offset		15° Offset		30° Offset		45° Offset	
	Δ °	360°	Δ °	360°	Δ °	360°	Δ °	360°
35	80.0	11,600						
40	78.5	11,200						
45	77.0	10,700						
50	75.5	10,300	79.5	8,400				
55	74.0	9,800	78.0	8,000				
60	72.5	9,400	76.5	7,700				
65	70.5	9,000	74.5	7,400	79.0	6,200		
70	69.0	8,600	73.0	7,100	77.5	6,000		
75	67.5	8,200	71.5	6,900	75.5	5,800	79.5	5,200
80	65.5	7,900	69.5	6,700	73.5	5,700	77.5	5,100
85	63.5	7,500	67.5	6,400	72.0	5,500	75.5	5,000
90	62.0	7,200	66.0	6,200	70.0	5,400	73.5	4,900
95	60.0	7,000	64.0	6,000	68.0	5,300	71.5	4,900
100	58.0	6,700	62.0	5,900	66.0	5,200	69.0	4,800
105	56.0	6,500	60.0	5,700	64.0	5,100	67.0	4,800
110	54.0	6,200	58.0	5,500	61.5	5,000	64.5	4,700
115	51.5	6,000	55.5	5,400	59.5	4,900	62.5	4,700
120	49.5	5,800	53.5	5,300	57.0	4,900	59.5	4,700
125	47.0	5,700	51.0	5,200	54.5	4,800	57.0	4,700
130	44.5	5,500	48.5	5,100	52.0	4,800	54.0	4,700
135	41.5	5,000	46.0	5,000	49.0	4,700	51.0	4,700
140	38.5	4,500	43.0	4,900	46.0	4,700	47.5	4,700
145	35.5	4,100	39.5	4,400	42.5	4,600		
150	31.5	3,700	35.5	3,900	38.5	4,100		
155	27.5	3,300	31.5	3,500	33.0	3,600		
160	22.5	2,900	26.0	3,000				
165	15.0	2,600	17.0	2,600				
Min.Bm. Ang./Cap.	0.0	900	0.0	900	0.0	1,000	0.0	1,200

Not for crane operations